



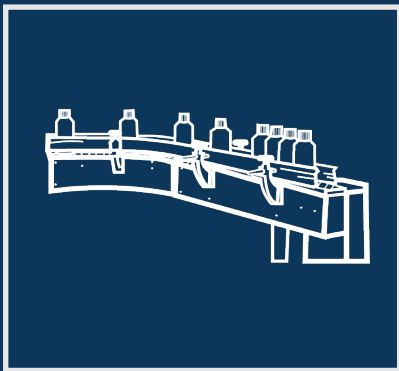
# Conveying solutions - infeed/outfeed

PMW Engineering

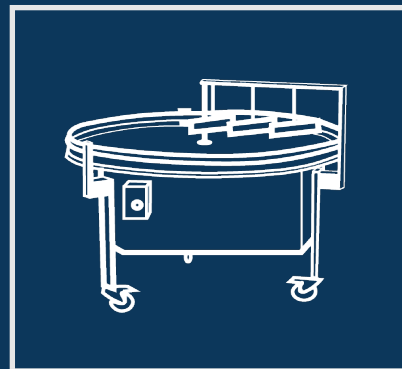


[www.pmw-engineering.com](http://www.pmw-engineering.com)

# Conveying solutions



Conveying equipment



Sortation conveyors

# Our expertise, your advantage

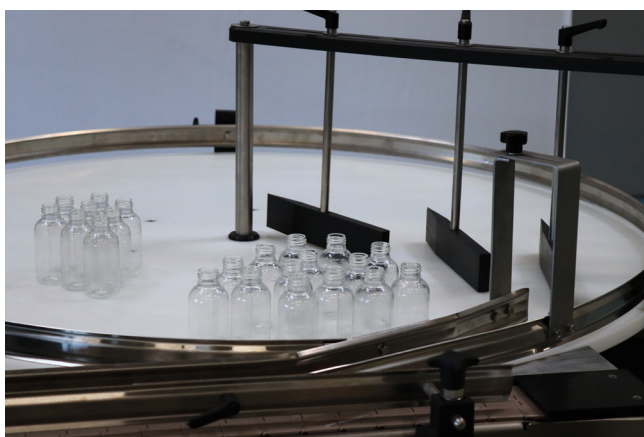
At PMW, we have more than 30 years of experience in the packaging industry. We develop and produce equipment for cap handling, capping, and filling ensuring cost effective and durable solutions.

We do our development based on our many years of experience and expertise, our skilled employees, external specialists, and sub suppliers.

## Flexible and customized solutions

We listen to the needs of our customers and we know that no production looks the same. That is why our machines and units are developed as modules – that enables us to help put together customized solutions that caters to your exact needs whether it is for the food and beverage industry, the pharmaceutical, chemical or cosmetic industries.

At PMW, we want the best for our customers, as we want to supply the most flexible, easy and cost-effective solutions for our customers as possible. Our machines can be combined with products from our own line and





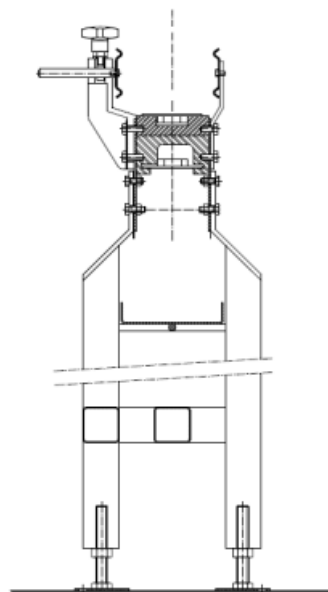
# Conveyor equipment

PMW Engineering A/S manufactures conveyors for multiple purposes and in many different sizes. The PacLine series is a horizontal container conveyor for containers in diameter or width of 20mm to 500mm. The conveyor bearer is made of stainless steel and carries the containers on a plastic or stainless lamina chain. The PacLine series is produced in band widths of 82.5, 114 and 190mm, both as straight-through or as flex conveyor.

## The PacLine series

Included in all PacLine equipment as a basic feature is:

- 3000 mm stainless steel conveyor
- Drive unit with infinitely variable hollow shaft gear/engine
- Lamina band in adapted size
- Stainless steel railing, mounted on adjustable plastic holder
- Ø 60 mm stainless steel supporters with adjustable plastic



## Choose between

### PacLine 82.5

82.5 mm wide lamina band

### PacLine 114

114 mm wide lamina band

### PacLine 190

190 mm wide lamina band



# PMW PacFeed

## Rectangular feeding table – for bottles, jugs and other containers

PMW PacFeed 2000 is a type of conveyor that is placed at the beginning of a production line to increase the line's efficiency and decrease labour needs.

### Technical specification

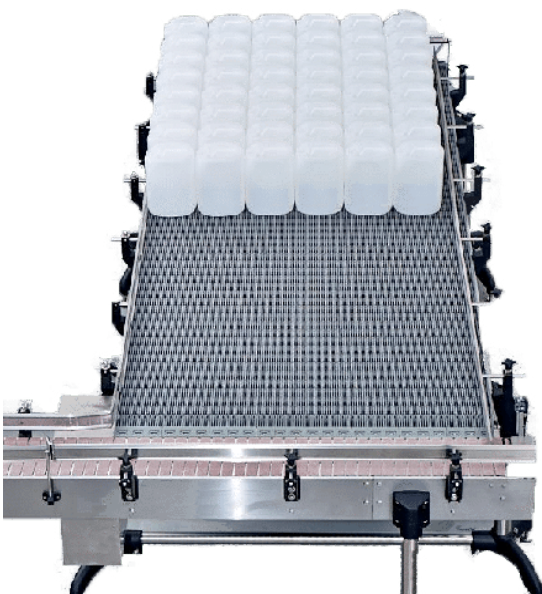
#### Features:

- Stainless steel construction.
- Conveyor belt in acetal thermoplastic.
- Dimensions: 1000 mm x 2000 mm as standard, can be build to customer specified measurements.
- Legs with adjustable height, in Ø 60 mm stainless steel.
- Adjustable side rails in stainless steel.
- Photocells for queue control.

### Extra equipment

Pneumatic side push, to ensure that containers are properly and efficiently transferred to the conveyor in neat rows.

Side conveyor, for gently fixing containers and driving them forward to specific point on the line-conveyor. For optimal control and precision in transferring containers. Ideal for conveying in continuous motion.



# PMW InFeed 1200

## Rotary table for unscrambling and bottle feeding

The PMW InFeed 1200 is a rotary table, also known as an unscrambling table or bottle feeding table, designed to support production lines, increase their efficiency and decrease their dependency on manual labour. The PMW InFeed 1200 takes bulks of empty, unscrambled containers, such as bottles, jugs etc., and discharges them onto a conveyor belt in single file.

The PMW InFeed 1200 consists of a stainless steel frame with a table top which rotates on its own axis. From a frame above the table top, three guide rails with adjustable height are suspended in a row.

To operate the PMW InFeed 1200, containers are placed manually on its table top, which can be done in bulk and at random. As the table top rotates, the row of suspended guard rails lead the containers to the periphery of the table and thereafter through an outlet, onto the conveyor belt and ready for subsequent process.



# PMW AccuBoard

## Rotating accumulation table – 600, 800 or 1200 mm in diameter

The PMW AccuBoard is a type of conveyor typically used to convey finished units away from the production line and collect them, providing workers with time and a space to gather finished units for packing. PMW AccuBoard can be placed at the end of a production line, set to receive finished units and neatly arrange them to be able to fit as many units as possible on its table surface.

One or several PMW AccuBoards can also be placed at various points on the production line, making your production capacity even more robust and helping you maintain an uninterrupted production schedule. When placed on the side of a production line instead at the end of it, the PMW AccuBoard allows for finished units to be conveyed past it, only commencing its function when its photocell detects a queue building up on the conveying belt. When that happens a hatch springs out in front of the incoming containers, diverting them away from the conveyor belt and onto its rotating table top, only stopping if the table reaches maximum capacity.

The PMW AccuBoard is constructed in stainless steel and can withstand heavy cleaning.

**Comes in three different sizes**

Ø 600 mm, Ø 800 mm, and Ø 1200 mm





---

## Our companies

### Jesma Weighing Solutions

Helsingørvej 18  
DK-7100 Vejle  
Tel: +45 75 72 11 00  
@: Jesma@jesma.dk

### PMW Engineering

Helsingørvej 18  
DK-7100 Vejle  
Tel: +45 46 32 16 50  
@: info@pmw-engineering.com

### S-E-G Instrument

Gjuterivägen 21  
SE-168 67 Bromma, Stockholm  
Tel: +46 87 64 74 00  
@: inform@s-e-g.se

---

 Part of Jesma Group

[www.pmw-engineering.com](http://www.pmw-engineering.com)